

A man in a striped shirt is shown in profile, holding a silver laptop. He is standing in front of a row of grey lockers. One locker door is open, and the laptop is being held in front of it. The scene is lit with warm, yellowish light.

# IT Asset Management



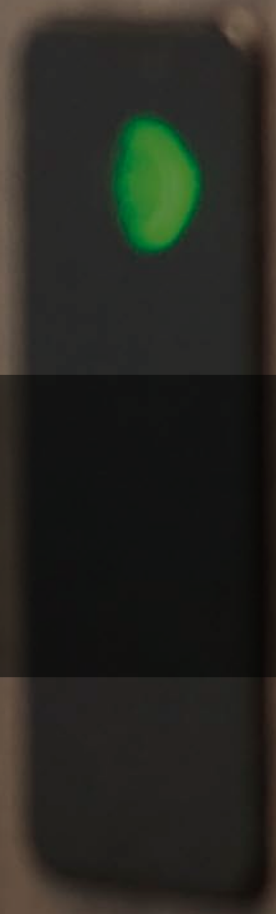
Think SMART.  
Think TZ.

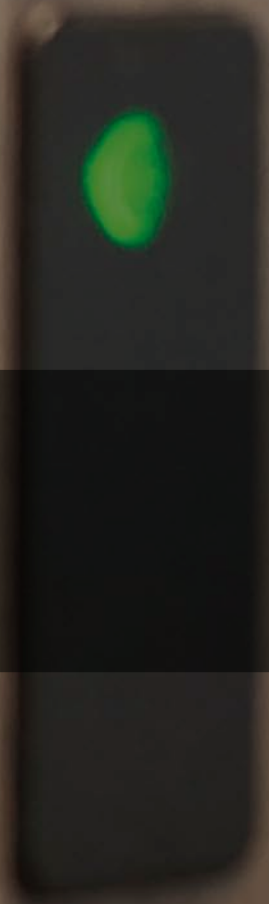


As the agile workplace continues to challenge traditional business processes and traditional working hours, organizations need a flexible, responsive solution for the distribution and management of IT assets. Easy asset reservation and allocation, 24-hour drop / collection access, borrow and return, replenishment or deposit for service processes are fast becoming standard industry requirements.

Asset management teams need a sophisticated locker solution to solve all these challenges and more.

## 360° Inventory Management.





TZ SMarT Asset Management Locker systems deliver a seamless solution for inventory and IT asset management for any organization. Our SMarT Lockers make it easy for assets to be collected or returned 24 hours a day, seven days a week.

Our unique software allows you to manage customers and agents, deliveries and collections, asset reservation and inventory allocation. And, the TZ system can be integrated with third party applications using industry standard API Library.



Improving Supply  
Chain Accountability.



# Safeguard Valuable Assets.



## Why TZ SMARt IT Asset Management Lockers?

TZ SMARt Locker deployments provide a complete inventory solution to revolutionize asset management within an organization, providing an effective means to safeguard valuable assets and ensure end-to-end chain of custody.

### Locker Loading with Loaner and/or Owned Assets

Agents have option to load the locker bank with loaner items for users to borrow at any time or drop off an owned item for a user to collect from locker bank.

### 24/7 Asset Collection

Users have convenience to borrow loaner or collect owned assets 24/7.

### Third Party Application Integration

In network version integrates with third party applications using an extensive API suite and also off-the-shelf integration with Active Directory to import user records

### Real-Time Reporting

TZ's comprehensive dashboard and real-time reporting capability offers unparalleled insight for tracking inventory items transactions.





# Security. Accessibility. Workflow.

TZ solutions offer a secure, simple, easy-to-use automated asset management system. Designed to simplify the internal management of group, agents, user inventory items drop-off, collections or return items. TZ SMARt Lockers also ensure the highest levels of flexibility and convenience.

## State-of-the-Art Technology

TZ SMARt Locking Devices provide unique security with real-time monitoring, reporting and management capability.

## Flexible Solutions

TZ's modular design and range of aesthetic and functional options enables configuration flexibility. TZ offers software modifications to meet workflow and integration requirements.

## Extensive Client Base


TZ has an extremely credible track record of successful deployments with large globally known corporate clients.

## Features

 Dynamic approach to supply chain management

 24 x 7 secure and convenient solution

 Customizable workflow to meet specific needs

 Real time reporting capabilities

 API integration with third party applications

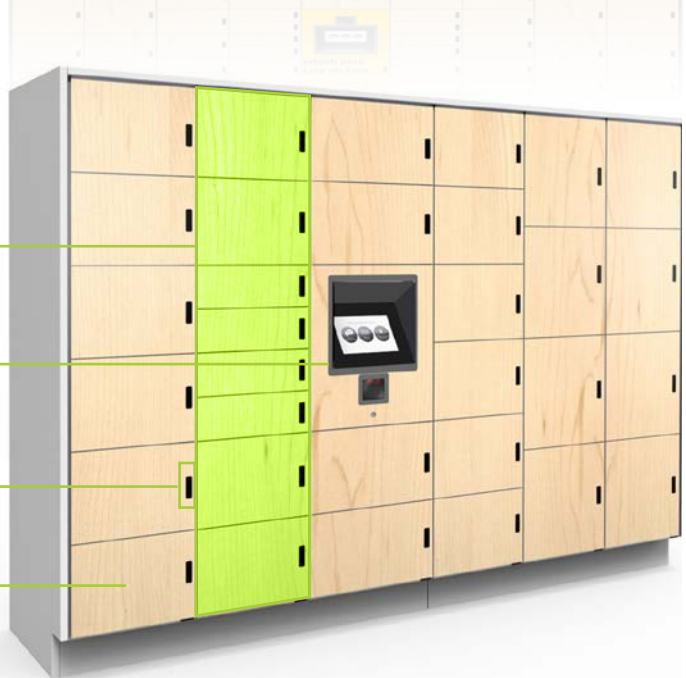
 Modular and scalable solution

 Can run as standalone kiosk or networked

 Authentication options –  
RFID, QR Codes or other



CUSTOMIZABLE FINISHES



## TZ Hardware

The TZ SMARt Asset manager System features the following hardware:



### Customizable Locker Sizes

to suit any IT asset size requirement



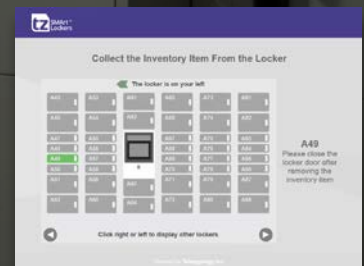
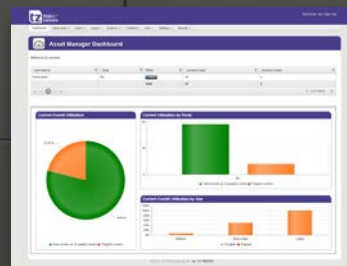
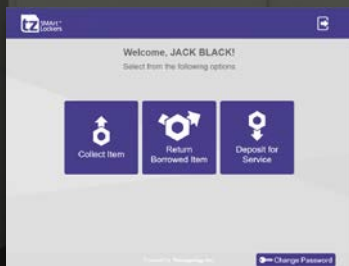
**Control Interface** with touchscreen, barcode scanner and RF card reader



**SMARt Locking Device** with embedded intelligence and integrated sensing.



**Modular Column Design** to enable configuration and layout flexibility.



CUSTOMIZABLE USER INTERFACE DISPLAY

CONTROL SERVER INTERFACE DISPLAY

## TZ Software

TZ's software architecture is designed as an extensible framework that operates in its simplest form as a stand-alone system with a localized client application at the Locker Bank managing workflow implementation. The software infrastructure can be extended into a fully integrated and networked platform that synchronizes Locker Banks with an enterprise level centralized Locker Management system for remote system management, real-time Locker reservation, live Locker monitoring, reporting and operational control. The System is also designed to integrate and interface with back-end third party systems for end-to-end functionality.

### User Interface at Locker Bank

- › Allows recipient to retrieve asset from the Locker in a secure manner.
- › Allows designated agents to place assets in the Locker.
- › Keeps an audit trail pertaining to assets, lockers accessed, system over-rides and general traffic through the System.
- › Can synchronize with Locker Management Portal to push or pull data and manage transaction information.

### TZ Locker Management Portal

- › Provides centralized dashboard and remote monitoring capability.
- › Offers real time tracking and management of asset information.
- › Generates aggregated reports for all connected Lockers.
- › Enables interfacing and integration with third party back-end systems.



Think SMART. Think TZ.

[www.tzsmartlockers.net](http://www.tzsmartlockers.net)